

Information  
for people with  
**mesothelioma**  
and their carers

# mesothelioma

Compiled by  
Mavis Robinson MBE, RGN  
2008 Edition

## 1 What is mesothelioma?

Frequently asked questions about the disease itself

---

page 2

## 2 Financial & legal

A brief guide to benefits and compensation issues – what you may be entitled to and where you can get further help

---

page 9

## 3 Help & information

Sources of help, useful information, telephone numbers and websites

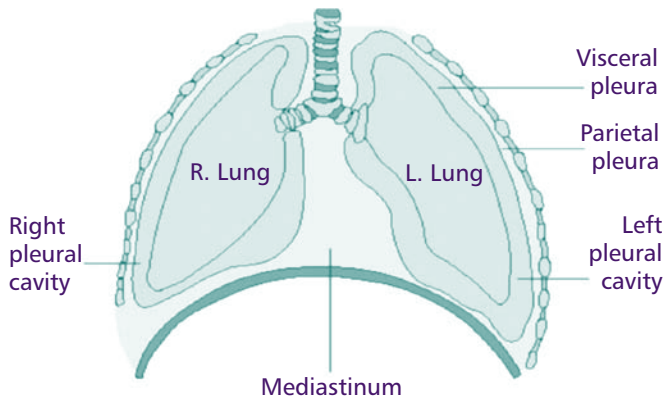
---

page 20

# 1

## What is mesothelioma?

Mesothelioma (also known as 'diffuse' or 'malignant' mesothelioma) is a form of cancer which affects the thin membranes lining the chest (pleural mesothelioma) or, less commonly, the linings of the abdomen (peritoneal mesothelioma). It may also surround the organs within these cavities for example the heart, lung and intestines.



## ***Pleural mesothelioma***

The pleural lining has two layers – an inner (visceral) layer lining the lung and an outer (parietal) layer lining the chest wall. The pleura produce fluid to lubricate the space between the two layers allowing the layers to slide comfortably over each other as we breathe.

Pleural mesothelioma causes the pleura to thicken. This may make it press on the lung or attach itself to the chest wall. Fluid, sometimes several litres, can collect between the two layers and cause breathlessness. This is known as a pleural effusion.

## ***Peritoneal mesothelioma***

The peritoneum also has two layers, the inner (visceral) layer next to the abdominal organs and the outer (parietal) layer lining the abdominal wall. Peritoneal mesothelioma causes the peritoneum to thicken and fluid (known as ascites) to collect in the abdomen causing it to swell.

## ***What causes mesothelioma?***

Exposure to asbestos is the only known cause of mesothelioma. It was a relatively rare disease up to the 1980's, but is now occurring more frequently because of the heavy industrial use of asbestos in the post-war years. For most people diagnosed with mesothelioma the exposure happened 20-40 years previously although it could, in some instances, be a longer or a shorter interval. Sometimes the asbestos exposure may have been very brief and not always easy to identify. Mesothelioma is, however, more common in people who have had repeated exposure, usually in a work environment. There are several types of asbestos all of which have been known to cause mesothelioma.

## ***How is mesothelioma diagnosed?***

Early diagnosis is difficult. In most cases the first obvious sign is sudden breathlessness caused by an accumulation of fluid in the pleural space. It may be accompanied by other symptoms such as chest pain. Scans and X-rays can provide strong evidence to support the diagnosis especially coupled with a history of asbestos exposure.

However, other diseases can produce these symptoms and to be certain of a correct diagnosis more investigations often need to be carried out. Scans, fluid taken for laboratory examination, needle biopsy or keyhole surgery to take a biopsy (a small sample of tissue) are likely to be carried out to help confirmation of diagnosis. These tests and results could take several weeks to complete.

## ***Is there any treatment that may help?***

Mesothelioma responds very little to the normal cancer treatments such as chemotherapy and radiotherapy. Any treatment offered depends on several factors. These should include patient choice, how well someone is, and how advanced the disease is. At present, there is no known cure for this disease.

The initial most helpful treatment deals with the symptoms of the disease. Removing fluid from around the lung can help to relieve breathlessness. It can be drained either by drawing it off or inserting a small drainage tube. However, fluid often re-accumulates and the chest physician or surgeon may perform a procedure called a 'Pleurodesis'.

This is an attempt to “stick” the lung surface to the chest wall by inserting sterile talc into the pleural space. This may be done by a surgeon using ‘keyhole surgery’ otherwise called VATS -Video Assisted Thoracoscopic Surgery.

## **Surgery**

A relatively minor form of surgery may be carried out during the VATS procedure, involving the removal of some of the tumour. Surgery may also improve some of the symptoms of the disease.

A major operation called an Extra-pleural Pneumonectomy (EPP) is suitable only for a very select group of patients with early stage disease and who are physically and mentally able to tolerate such extensive surgery. The operation involves the removal of the whole affected lung along with its lining, the lining of the heart and part of the diaphragm. A limited number of thoracic surgeons in the country can carry out this procedure.

## **Chemotherapy**

This is drug treatment to destroy or control cancer cells. Unlike other cancers there is no evidence that chemotherapy ever cures mesothelioma. Some trials and studies have however indicated that it may help to improve symptoms temporarily and may extend life expectancy slightly.

Not all patients with mesothelioma will benefit from chemotherapy and there is no way of knowing which patients will benefit and which will not. It is important for you to discuss this with doctors and nurses involved in providing it.

## **Radiotherapy**

This is the use of high energy radiation to kill diseased cells in the body. In mesothelioma it can be used in two ways:

- 1) A short course of treatment to the chest wall where a biopsy has been done. This is a preventative measure and is intended to stop mesothelioma growing in the skin layer.
- 2) Some patients may benefit from some pain relief following radiotherapy.

## ***Research***

The search for new ways of treating cancer goes on, and current programmes in mesothelioma research are testing the use of drugs which can control cancers by preventing their development. New biological treatments are also being studied to find out if they can be used alone, or in combination with chemotherapy drugs, to destroy cancer cells or to prevent them from multiplying. Although most of these new treatments are not ready to give to all mesothelioma patients routinely, the work that is being done today may offer new hope for tomorrow. For this reason charities (like the JHMRF) fund research to help to bring that day closer.

## ***Will it spread to other parts of my body?***

Mesothelioma spreads slowly outwards from its starting place, along the lining of the chest or abdominal wall, and problems experienced are usually confined to that locality and areas in close contact.

## ***Will I have any pain? How can it be handled?***

Because of the nature and position of the tumour near the chest wall, some people with mesothelioma have aches and pains even before diagnosis, whilst others have few problems with pain.

It is important to realise that, if you are one of the unfortunate ones with early pain, this is not necessarily related to the extent of your disease -but more to do with where the mesothelioma is situated.

The pleural area is well supplied with nerve endings which can easily be irritated or compressed by the tumour.

To maintain the quality of your life, it is important that you obtain adequate help with pain control if this becomes a problem. It is very rare for pain to be out of control and drugs are readily available which need to be given at the correct level and combination for each individual. You can ask for specialist help if you are having difficulties with pain. Hospice and Macmillan nurses are available in most areas and your GP or hospital consultant can request their help.

## *How can I stay as well as possible?*

There is quite a lot you can do . . .

You can help yourself by maintaining your general health as much as possible i.e. a good balanced diet, preferably high calorie and rich in protein. If your appetite is poor, you can supplement your diet with specially balanced drinks which prescribed by your GP – or see your hospital or community dietitian for advice.

Exercise is essential to maintain good muscle tone. If your energy level is low you can still do passive exercises of legs and ankles whilst sitting down.

If you lack energy or get breathless on exertion, save your energy for the things you really want to do; make life as easy and convenient as you possibly can – and don't be too proud to accept help to achieve this (other people like to feel needed and useful).

Complementary therapies such as relaxation, massage and aromatherapy may be helpful in dealing with stress and anxiety.

## *What help is available?*

Support is available from your GP and consultant. Many hospitals now have specialist lung nurses or Macmillan nurses who you may meet when the diagnosis is first made. Nursing help is available in the community; you should contact your community nursing sister (if you have one) – preferably soon after the diagnosis. S/he can give ongoing support and can arrange practical help as needed.

Domestic help, adaptations to your house and loan equipment e.g. bathing aids can be provided via your local social services. They can also help with day-to-day living problems e.g. washing, dressing and cooking. These services are 'means tested' so it is important to claim benefits (see section 2) to help cover these costs.

## *Who can I talk to?*

Many people get emotional help from friends and relatives. This, however, may not be enough and carers, also, may feel the need for some support. Professional help and support is available in many areas and your GP or community nurse may be the best people to advise you about what is available locally – or you could phone one of the helplines (see pages 23 and 24). You may have contact with a minister who could help? Children and young people in your family need to know what is happening too. Don't feel they need to be protected and be as open and honest with them as their age allows. Their fear of what they imagine is often much worse than reality.

Please remember – 'coping' does not mean managing alone – and people often want to help, even if it's just by listening to your worries or doing errands for you. Haven't you ever felt good because you helped someone when they needed it? Allow those around you to feel good too.

## *Others who could help*

If you would find it helpful to talk to someone who has had to cope with the problems of this disease as a carer, there are several volunteers prepared to try and help you in this way. Contact one of the asbestos support groups for help with this.

**Contact** Mesothelioma UK on **0800 169 2409** or see our website for other sources: [www.junehancockfund.org](http://www.junehancockfund.org)

# 2

## Financial & legal issues

*It would be wise to seek help from your local benefits adviser or asbestos disease support group to guide you through the tricky state benefits system*

## ***Claiming welfare benefits***

### ***Department for Work & Pensions***

To request benefit forms ring **0800 88 2200** (the DWP enquiry line), or download forms from **www.direct.gov.uk**. It is advisable to do this because if the benefit is awarded it will start at least from the date of that telephone call. They will also help with any queries you may have.

Always keep copies of any claim forms, letters or queries you may send or receive from the DWP. Record who you have spoken to, if you phone, and make a note of the date, time and reason for your call. Have your National Insurance number available.

Always consider appealing against any decision disallowing your benefit (get help to do this).

### ***Pneumoconiosis Workers Compensation Scheme***

If you are awarded Industrial Injuries Disablement Benefit and seem unlikely to be able to claim civil compensation from a previous employer, you can be entitled to an award under this scheme. For an application form and details ring 0800 279 2322 (if you get this award this may affect any means-tested benefits.)

***Regardless of where or how you were exposed to asbestos, even if it was not in paid employment, it is advisable to consult an asbestos support group or the CAB***

**Claim ALL benefits you even THINK you might be entitled to – many people miss out by failing to claim.**

## *Industrial disablement benefit/War pension*

You can claim Industrial injuries disablement benefit or War pension but not both.

To be eligible to claim either, you must fit the following criteria.

- There must be a diagnosis of mesothelioma
- You must be able to demonstrate that you came into contact with asbestos during the course of paid employment after July 1948 or during military service.

Please note that this benefit, (although paid on top of many benefits) may reduce or lose you Income Support, Housing Benefit and Council Tax assistance.

### *To obtain claim forms -*

For Industrial injuries disablement benefit ring 0800 88 2200 ask for form BI (100) pn or ring the veterans' helpline 0800 169 2277 for war pension information, website: <http://www.veterans-uk.info/>

To speed up your claim for industrial benefits, ask your hospital specialist lung nurse for form BI100PN (A). This is a confirmation of your diagnosis and you should enclose it with your industrial injuries disablement benefit claim

## *The Disability Route (a very brief guide)*

You may be able to claim at least one benefit from each box

**1** **1** Benefits to replace basic earnings because you cannot work (1a) or because you are caring for someone who cannot work (1b) or because you have recently been widowed (1c)

**1a** Statutory Sick Pay or Incapacity Benefit (National Insurance contributions are needed).

**1b** Invalid Care Allowance.

**1c** Bereavement Payment plus Widowed Parents Allowance or Bereavement Allowance.

**2** **2** Benefits to compensate for the effects of mesothelioma caused through your work or military service.

Industrial Injuries Disablement Benefit.

War disablement pension.

**3** **3** Benefits to assist with mobility/walking (under 65 years)

Disability Living Allowance (Mobility) higher rate, or lower rate.

**4** Benefits to assist with personal care needs -  
Disability Living Allowance (Care) under 65.  
Attendance Allowance over 65.  
Constant Attendance Allowance (no age limit).  
Exceptionally Severe Disablement Allowance (if you receive Constant Attendance Allowance at one of the two upper rates).

**5** Benefits to top up a low income  
Income support  
Working Family Tax Credit  
(If you have dependant children)

**6** Benefits to assist with rent and council tax  
Housing benefit and council tax benefit

For example -

If your mesothelioma has been caused through work and you have care and mobility needs, depending on your age and circumstances you could be claiming the following benefits.

**Incapacity benefit**

**Industrial injuries disablement benefit**

**Constant attendance allowance**

**Exceptionally severe disablement allowance**

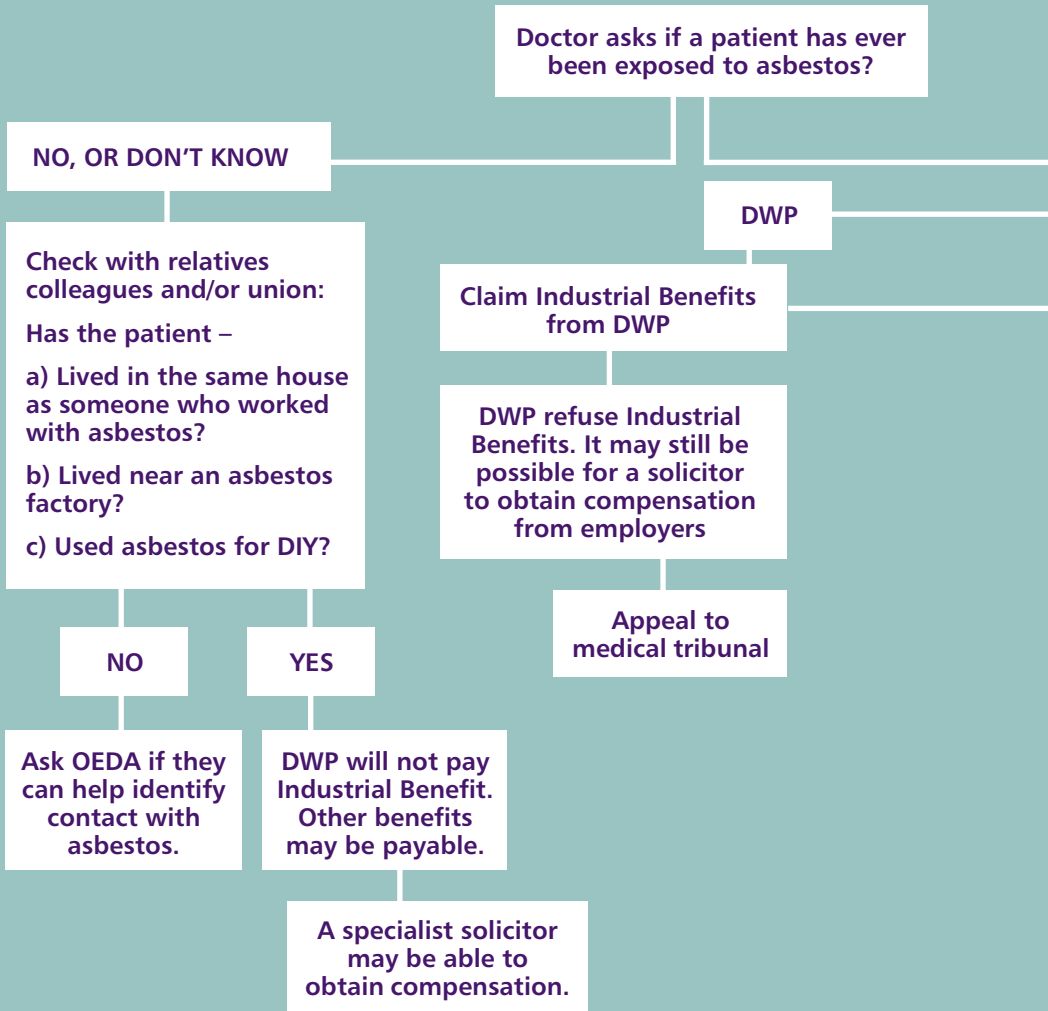
**Disability living allowance (mobility and care components)**

**Plus possibly income support, housing benefits, council tax and extra amounts for your carer/partner and/or children.**

**Do** seek help with your benefit claims.

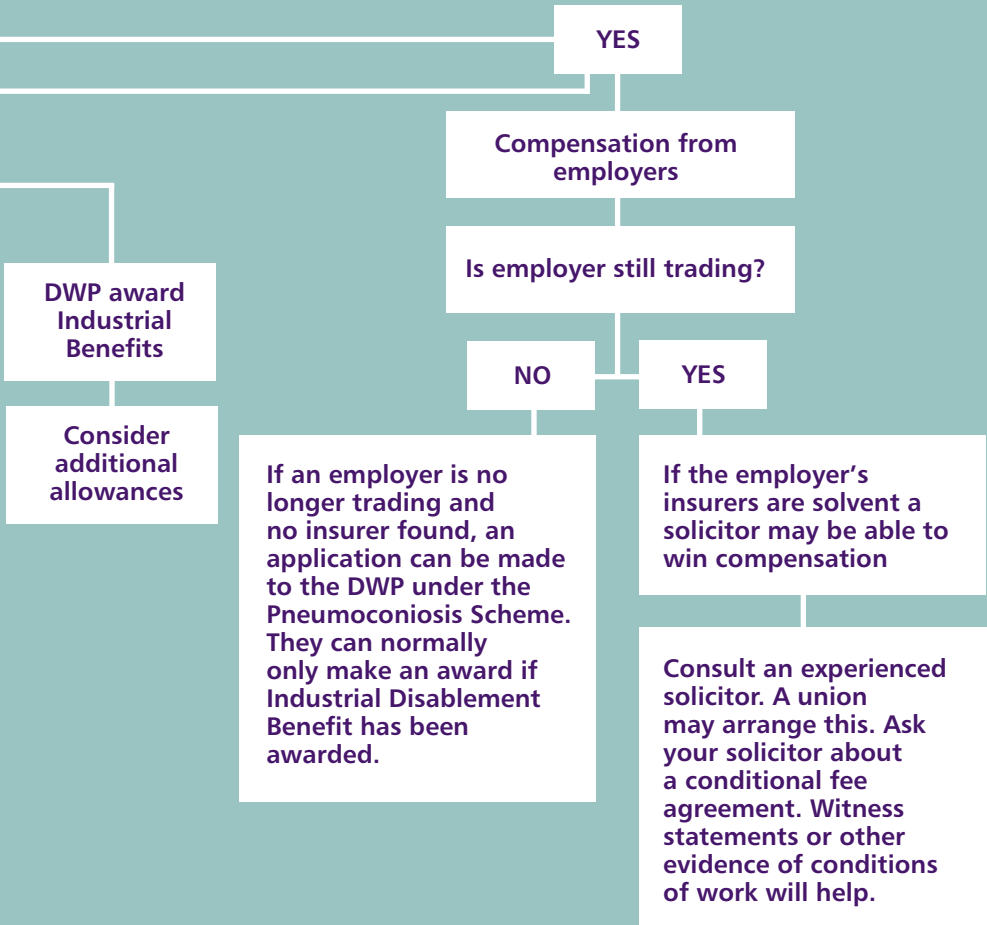
## Occupational & Environmental Diseases Association

# OEDA



# Action Guide

Claims for DWP (Department of Work and Pensions – previously the DSS) benefits and compensation from employers, the asbestos industry or DWP Claim under Pneumoconiosis Scheme.



## ***I have been diagnosed with mesothelioma. Should I see a solicitor?***

Yes, if at all possible, as medical experts estimate that approximately 95% of all mesothelioma cases are caused by exposure to asbestos (usually in the workplace) and, more often than not, someone (be it an employer, factory owner, or asbestos manufacturer) is to blame. Often people say "but, no one knew of the risks in those days; it was so long ago," and put off the idea of taking legal advice, assuming nothing can be done. In actual fact, more often than not, there is a legal remedy, even if an employer has apparently ceased to exist. It is unsafe to assume that no legal action can be taken.

## ***Do I need to see a solicitor immediately?***

Depending on the treatment you are receiving and how you are feeling, it is wise to take legal advice as soon as you can as there are time limits for all personal injury claims. As a general rule a court action (proceedings) must be started within three years of the diagnosis (or from the time you first suspect that you are suffering from an asbestos related disease), although the Court has discretion to set aside the three year 'limitation period'. In any event, given the poor prognosis, most people do not want to delay taking legal action. Since the civil justice system was reformed, mesothelioma claims can be 'expedited' or fast-tracked with special procedures for dealing with such cases. Most cases can be concluded much more quickly than in the past.

## ***Can I go to any solicitor?***

Most solicitors now tend to specialise. Even so, regrettably, some solicitors who are not experienced in this particular field do take on mesothelioma claims and that can have unfortunate consequences, especially as most employers instruct specialist firms to defend such claims. In that situation, it would not be a level playing field. Therefore, it is always sensible to seek out a solicitor who specialises in asbestos related disease litigation. The Law Society: 0870 606 2555, website: [www.lawsociety.co.uk](http://www.lawsociety.co.uk), in London, has a list of specialist solicitors, as do asbestos victims support groups and, before instructing a solicitor, it is always worth asking about his/her qualifications and track record.

For example, is he/she a member of the Law Society's Personal Injury Panel and/or the Association of Personal Injury Lawyers (APIL)?

How many asbestos-related disease cases have they successfully concluded within the last three years?

Is the person you are dealing with a qualified solicitor?

## ***Will it cost me a lot of money?***

Although legal aid is now rarely available for personal injury claims, the three main funding options are:

- Conditional fee ('no win: no fee') agreement
- Trade union funding
- Legal expenses insurance

As a consequence of changes introduced by the Access to Justice Act 2000, pursuing a personal injury compensation claim should not cost you anything.

Most solicitors offer a free initial interview, even if a home visit is required (as is often the case). The solicitor should discuss funding options at the outset, before any claim is intimated. If you are in a trade union/professional association, or have legal expenses insurance cover, then you may not have anything to pay, subject to the terms of the union agreement or legal expenses insurance policy.

If your solicitor is prepared to take the case on a 'no win: no fee' basis, then you may have to pay a one off insurance premium (recoverable in the event of a successful claim). However, the insurance cover will protect you against the risk of having to pay the other side's costs in the event that you lose or discontinue your claim (providing court proceedings have been started).

If you are successful, then your opponent's insurance company will pay your basic legal costs and also a 'success fee'\* in addition. You may not have to pay anything at all if your solicitor operates a 'no cost to you' policy.

However, be aware that some firms/organisations offering 'no costs to you' deals may not necessarily have the relevant expertise, as they often deal with 'fast track' (low value) personal injury claims. Industrial disease claims are complex and require skilful handling.

\* This is the lawyer's reward for taking on the case on and facing the possibility that he/she will not be paid anything at all if the case is lost.

## ***Will I have to appear in court?***

Unlikely, as most personal injury claims are either settled before court proceedings are commenced, or before the final hearing (trial). A very small percentage of claims (about 1%) are assessed by a judge (at the trial stage). Therefore, the chances of you appearing in court are slim, but not impossible. Your solicitor and legal team will explain the court process to you and, if there is a prospect of you having to give evidence in court, then you will be well prepared and well supported.

## ***I am in a trade union/professional association – can they help me?***

Very often, yes. It is a legal requirement that all the various funding options should be explained to you at the outset and, if there is a possibility that your membership organisation may fund your case, then that option should be explored. However, some trade unions, for example, are not prepared to provide legal aid/financial assistance if a person has ceased to be a member, or if the relevant exposure (to asbestos) took place before they joined the union. Many former trade union members are therefore disenfranchised. However, with the advent of conditional fees, you should not be placed at any disadvantage, provided you can find a solicitor who is prepared to take on your case on a “no win: no fee” basis.

## ***My relative died recently with mesothelioma – is it too late for me to take any legal action?***

No, claims can be brought by the executors/administrators of your partner’s/relative’s estate. Compensation can be claimed for your relative’s pain and suffering and any financial losses which they suffered as a result of their illness, so it is still worth seeking legal advice. There may also be a claim by the surviving spouse/partner for bereavement compensation and their reliance on the deceased person’s income and contribution to household maintenance.

## ***My partner has mesothelioma and is very ill and may not recover. Can we delay seeing a solicitor?***

Although it is very important to obtain a detailed witness statement from the person who is suffering from mesothelioma, that is not always possible if the sufferer is extremely ill when the link with asbestos is first made. If that is the case, then the presence of a solicitor may be unwelcome. However, any handwritten notes or diary entries, which may be relevant, ought to be preserved, together with any work records (for example – deed of apprenticeship/indentures etc). The family can often give important evidence even though it is indirect. However, there is no real substitute for the direct evidence given by the mesothelioma sufferer, him/herself. Their recollection of events is likely to be the most accurate. It is also worth making a note of the names and addresses of former work colleagues who may be able to give evidence about the sufferer's exposure to asbestos.

## ***I have been told that I probably have mesothelioma and I have been exposed to asbestos in the past. Should I see a solicitor even though the diagnosis is not 100% certain?***

Mesothelioma is a notoriously difficult illness to diagnose accurately and, even though there may be a clinical diagnosis, the doctors cannot always be 100% certain. Civil claims for damages (compensation) have to be proved on the balance of probabilities (i.e. more likely than not) and, if the medical evidence states that it is likely that you are suffering from mesothelioma, then you should see a solicitor who may still be able to investigate a claim. Remember that the limitation period starts at the time when someone has a reasonable suspicion that they are suffering from an asbestos related illness, not from the time when a 100% diagnosis is made and so, from that point of view, it is wise to take legal advice promptly.

### ***Special note***

*Certain deaths have to be reported to the coroner by the doctor who signs the death certificate – including deaths from mesothelioma. The coroner will decide if a post-mortem examination is necessary and whether or not to hold an inquest. It is wise to request that samples be retained for detailed examination. You may wish to have legal representation at an inquest if there is a possibility of a civil claim. In Scotland, the Procurator Fiscal is notified.*

# 3

## Sources of help and information

### **Mesothelioma UK – 0800 169 2409**

This is the National Macmillan Mesothelioma Resources Centre, which provides nursing and medical information about the disease. You can obtain impartial up to date information, about available trials and treatment and other aspects of care.

**Website:** <http://www.mesothelioma.uk.com/>

**E-mail:** [mesothelioma.uk@uhl-tr.nhs.uk](mailto:mesothelioma.uk@uhl-tr.nhs.uk)

**Tenovus Cancer Information Centre helpline: 0808 808 1010**  
[www.tenovus.com](http://www.tenovus.com)

It is anticipated that **Macmillan Cancer Support & Cancerbackup** will be amalgamating sometime in 2008

### **Northern Ireland**

**The Ulster Cancer Foundation helpline – 0800 783 3339**  
[www.ulstercancer.org](http://www.ulstercancer.org)

The association with previous employment and probable asbestos exposure means that mesothelioma presents a complexity of problems relating to benefit claims and legal issues. It is advisable to talk to someone with specialist knowledge of these issues. There are several groups who can help you with this. Be very careful to use a recognised group and do not respond to adverts promising to get you compensation or benefits.

Not all these groups can give specialist financial help or legal guidance, but all should be able to direct you to a group which can do this, or other sources of help.

### **Barrow Asbestos-Related Disease Support**

email: [stmarys.ulverston@virgin.net](mailto:stmarys.ulverston@virgin.net)

Tel: 01229 580 305

Fax: 01229 583 072

Web: [stmaryshospice.org](http://stmaryshospice.org)

### **Bradford Asbestos Victims Support Group**

email: [hazards@what-bohp.freemove.co.uk](mailto:hazards@what-bohp.freemove.co.uk)

Tel: 01274 393 949

**Cheshire Asbestos Victims Support Group**

email: cavsg@btconnect.com

Tel: 01928 576 641 Web: www.cavsg.co.uk

**Derbyshire Asbestos Support Team**

email: mail@asbestossupport.co.uk

Tel: 01246 231 441 Web: www.asbestossupport.co.uk

**Greater Manchester Asbestos Victims Support**

email: asbestos.gmavsg@virgin.net

Tel: 0161 636 7555 Web: www.asbestos-victims-support.org

**Hampshire Asbestos Support & Awareness Group**

email: diane@hasag.co.uk

Tel 07792 543 426/07940 328 637 Web: www.hasag.co.uk

**Merseyside Asbestos Victims Support Group**

email: grf15@dial.pipex.com

Web: www.asbestosdisease.org.uk

Tel: 0151 236 1895

**North East Asbestos Support & Awareness Group**

email: info@nasag.org.uk Web: www.nasag.org.uk

Tel: 01642 240044

**Ridings Asbestos Support & Awareness Group**

email: info@asbestos-action.org.uk

Web: www.asbestos-action.org.uk

Tel: 0113 231 1010

**Sheffield & Rotherham Asbestos Group**

email: sarag@aizelwoodsmill.co.uk

Tel: 0114 282 3212

**E.L.M.S. (East London Mesothelioma Support)**

email: info@elms-group.co.uk Web: www.elms-group.co.uk

Tel: 0800 8766 773

**North-West Wales Asbestos Victims Support Group**

Tel: 01766 770546 Tel: 01766 522238

**Asbestos Awareness Wales**

email: asbestosawarenesswales@yahoo.co.uk

Web: www.asbestosawarenesswales.org.uk

Tel: 07775 815 705

**Scotland**

**Clydebank Asbestos Group**

Web: www.clydebankasbestos.org.uk

Tel: 0141 951 1008

**Clydeside Action on Asbestos**

Tel: 0141 552 8852

This booklet is produced by the **June Hancock Mesothelioma Research Fund**, it is available free of charge to patients, relatives and others involved with the care of people suffering from mesothelioma. While we have done our best to ensure the accuracy of all information therein, we cannot be responsible for any errors. The June Hancock Mesothelioma Research Fund welcomes any donations to improve knowledge and provide research about mesothelioma.

The June Hancock Mesothelioma Research Fund is a UK Registered charity

Charity No: 1121784

For copies of this booklet, or for more information about the Fund please call The June Hancock Mesothelioma Research Fund on 0114 274 4420

e-mail: [info@junehancockfund.org](mailto:info@junehancockfund.org)

Website: [www.junehancockfund.org](http://www.junehancockfund.org)

Address: c/o Adrian Budgen, Irwin Mitchell,  
Riverside East, 2 Millsands, Sheffield, S3 8DT

## ***Acknowledgements***

*My thanks to the following for their contributions and invaluable help in the compilation of this booklet.*

Adrian Budgen – Solicitor

Liz Darlison – Nurse consultant

Mr John Edwards – Consultant thoracic surgeon

Kate Hill – Research fellow

Dr Martin Muers – Consultant respiratory physician

Carolynne Radcliffe – Welfare rights consultant

Nancy Tait MBE – Occupational and Environmental  
Diseases Association

# Action Mesothelioma Day

27th February annually  
with events held  
nationally.

For information contact  
your nearest asbestos  
support group

## *Charities:*

### ***June Hancock Mesothelioma Research Fund***

c/o Irwin Mitchell, Riverside East, 2 Millsands, Sheffield, S3 8DT

Tel: 0114 274 4420, e-mail: [info@junehancockfund.org](mailto:info@junehancockfund.org)

Website: [www.junehancockfund.org](http://www.junehancockfund.org)

### ***British Lung Foundation***

73-75 Goswell Road, London, EC1V 7ER

Tel: 0207 6885555, e-mail: [enquiries@blf-uk.org](mailto:enquiries@blf-uk.org)

Website: [www.lunguk.org](http://www.lunguk.org)

### ***Mick Knighton Mesothelioma Research Fund***

c/o G B Hunter Memorial Hospital, The Green, Wallsend, NE28 7PB

Tel: 0191 263 7386 e-mail: [cknighton-mkmerf@btconnect.com](mailto:cknighton-mkmerf@btconnect.com)

# mesothelioma charter

## ***We believe people with mesothelioma, and their families, have a right to:***

1. A speedy and accurate diagnosis, supported by a multi disciplinary team discussion
2. Good quality information from a variety of sources available in different media and languages
3. Support of a suitably qualified nurse and other multi disciplinary team members throughout their illness
4. Be considered for the best possible treatments available with the support and input of a multi disciplinary team
5. Have up-to-date advice on benefits and help in applying for them, and receive prompt payment of benefits
6. Have legal advice and guidance from a firm of solicitors experienced in mesothelioma claims
7. Guidance on end of life decisions and care at home
8. Provision of a consistent nationwide service from coroners using a clear and open process with a maximum case length of three months

## ***We call upon the Government to:***

9. Have mesothelioma made a national priority by the cancer tsar
10. Fund good quality research, alongside other national bodies, on mesothelioma with a view to improving diagnosis, treatment and outcomes for patients
11. Support the production of clinical guidelines on the best practice of diagnosis and management of mesothelioma
12. Ensure the Health and Safety Executive vigorously enforce existing regulations on asbestos

## ***We call upon all employers to:***

13. Prevent future exposure to asbestos by providing a safe working environment with all necessary equipment to protect employees
14. Work with unions and individuals to ensure enforcement of current regulations to safeguard all employees
15. Identify all asbestos in their properties and organise its safe removal where practical or necessary when work is being carried out.

